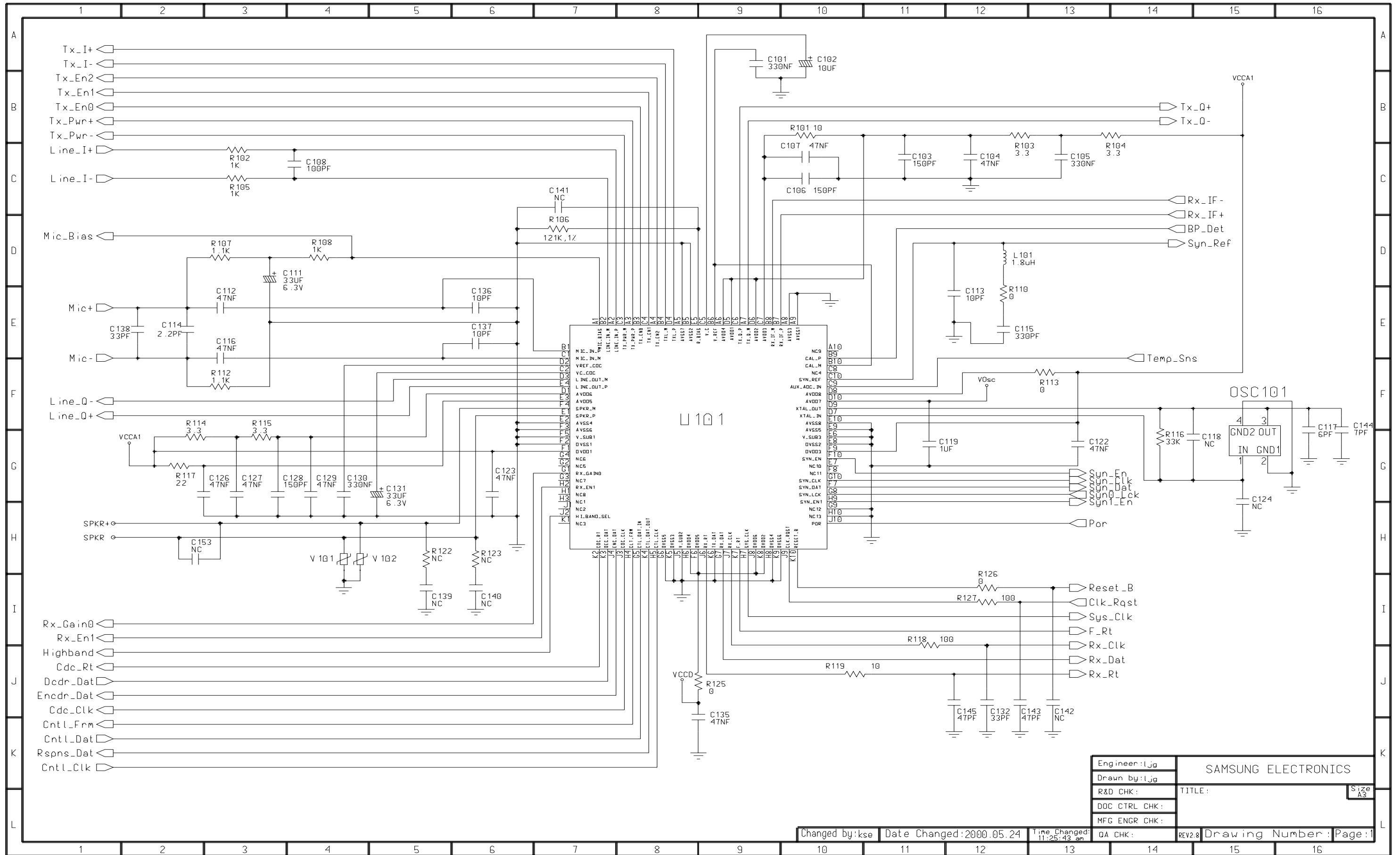


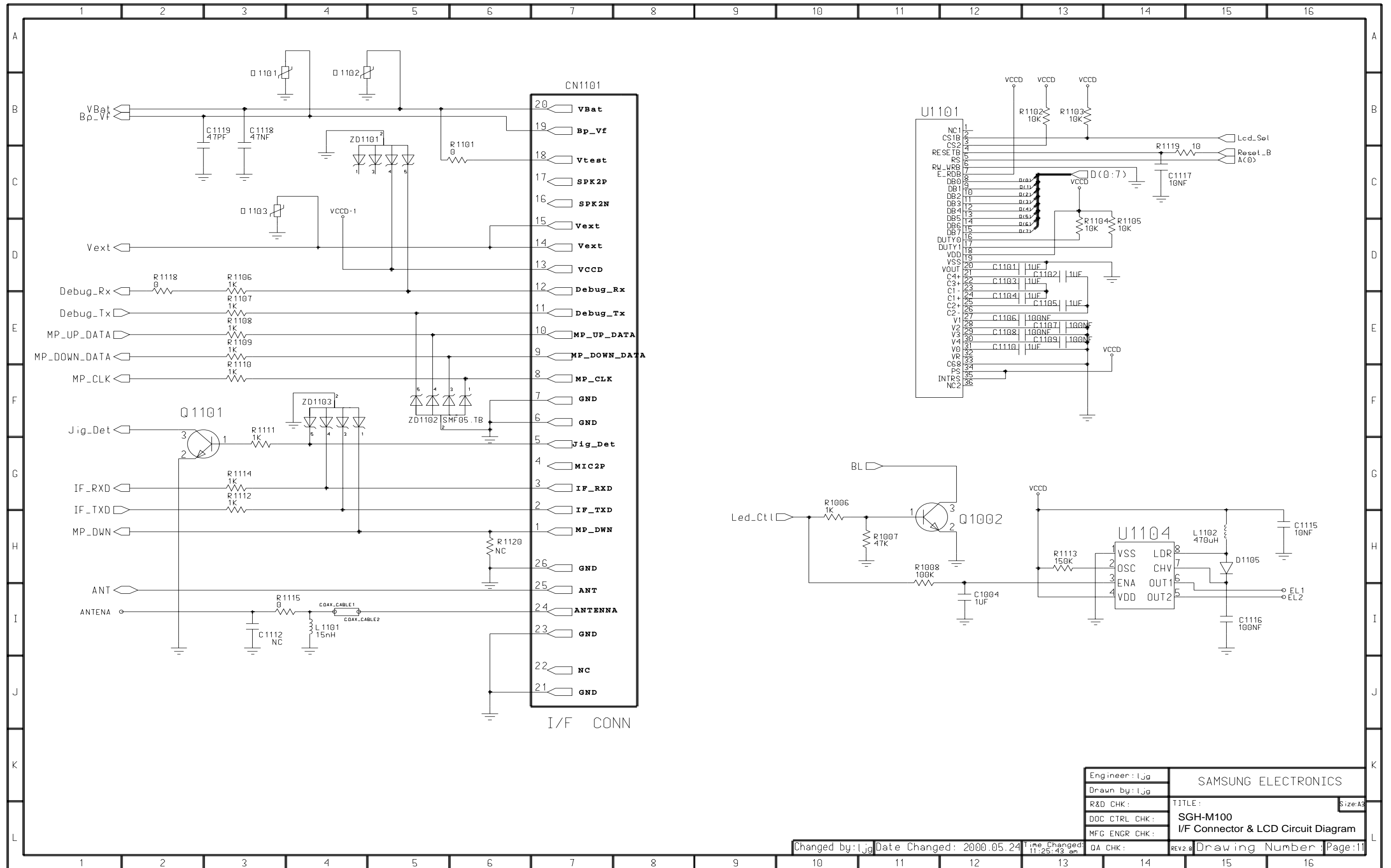
5. Circuit Diagrams

5-1 SGH-M100 Intergrated Analog Circuit Diagram



Engineer: IJg	SAMSUNG ELECTRONICS	
Drawn by: IJg	TITLE:	
R&D CHK:	DOC CTRL CHK:	Size A3
MFG ENGR CHK:	QA CHK:	REV2.8
Changed by: kse	Date Changed: 2000.05.24	Time Changed: 11:25:43 am
DA CHK:	REV2.8	Drawing Number: Page: 1

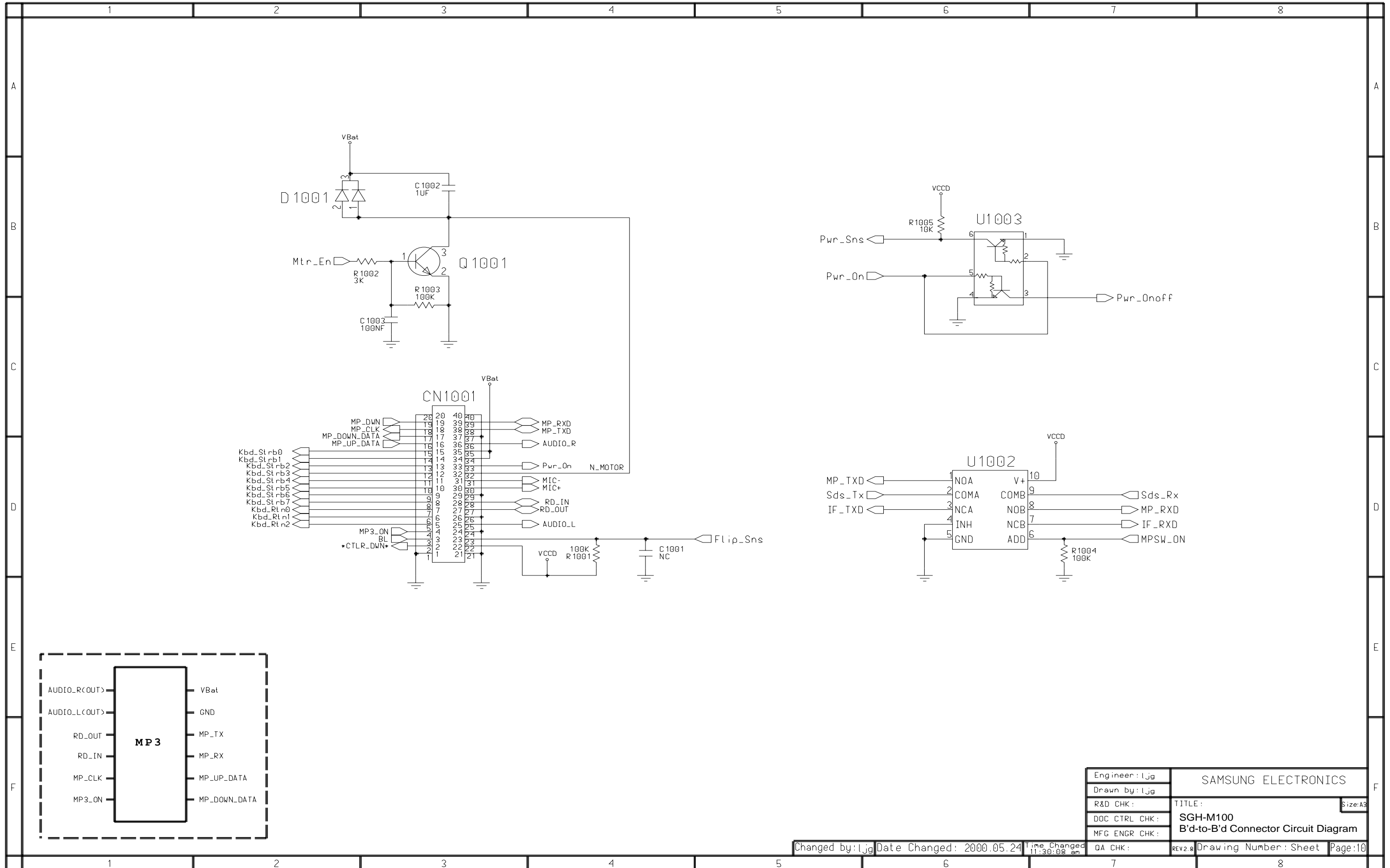
5-2 SGH-M100 I/F Connector & LCD Circuit Diagram



Engineer: l.jg	SAMSUNG ELECTRONICS		Size: A3
Drawn by: l.jg	TITLE:		
R&D CHK:	SGH-M100		
DOC CTRL CHK:	I/F Connector & LCD Circuit Diagram		
MFG ENGR CHK:	REV: 2.8	Drawing Number:	Page: 11

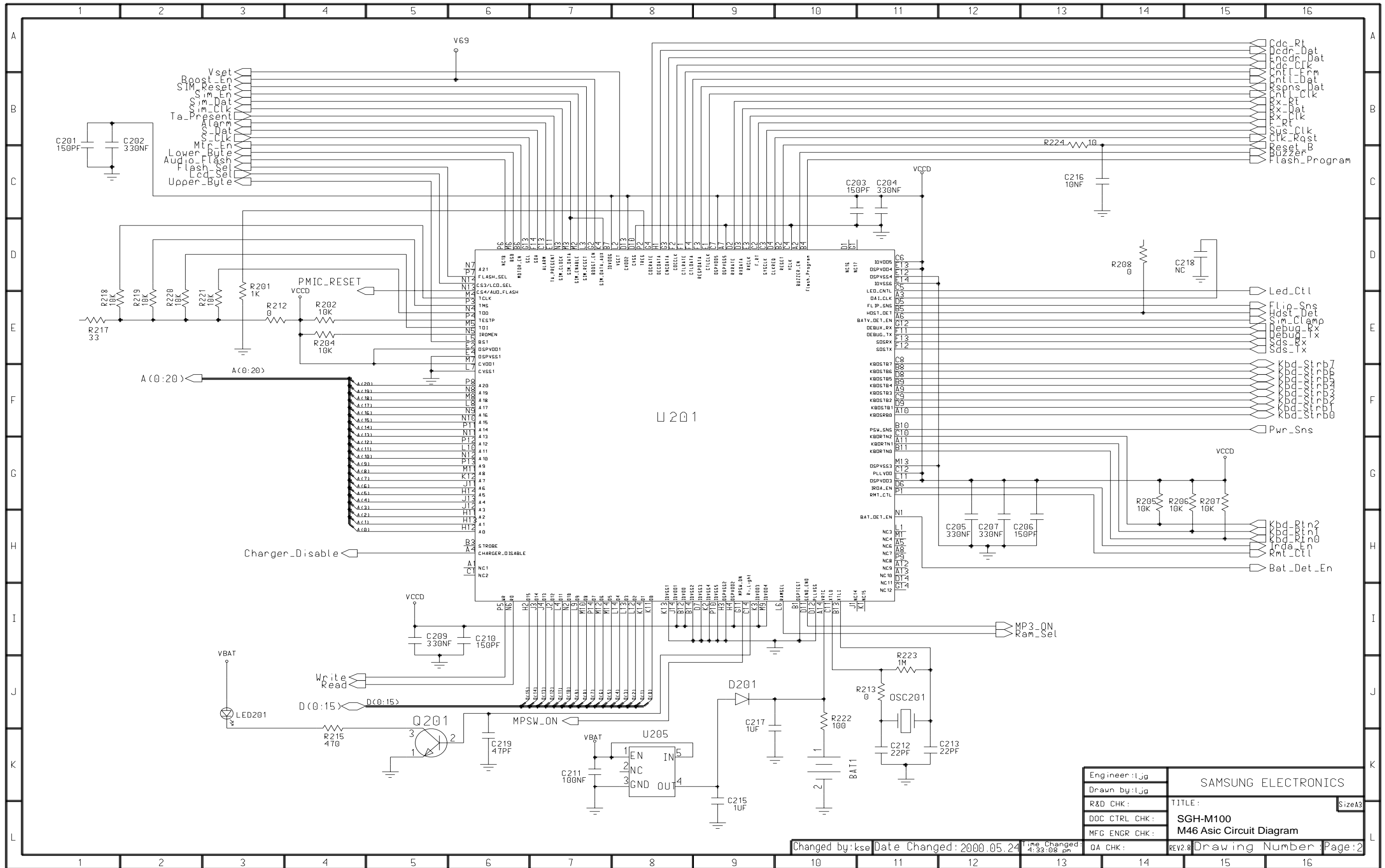
Changed by: l.jg Date Changed: 2000.05.24 Time Changed: 11:25:43 am QA CHK:

5-3 SGH-M100 B'd-to-B'd Connector Circuit Diagram



Engineer: l.jg	SAMSUNG ELECTRONICS	
Drawn by: l.jg	TITLE:	
R&D CHK:	SGH-M100	Size: A3
DOC CTRL CHK:	B'd-to-B'd Connector Circuit Diagram	
MFG ENGR CHK:	QA CHK:	rev2.8
Changed by: l.jg	Date Changed: 2000.05.24	Time Changed: 11:30:08 am
Drawing Number: Sheet	Page: 10	

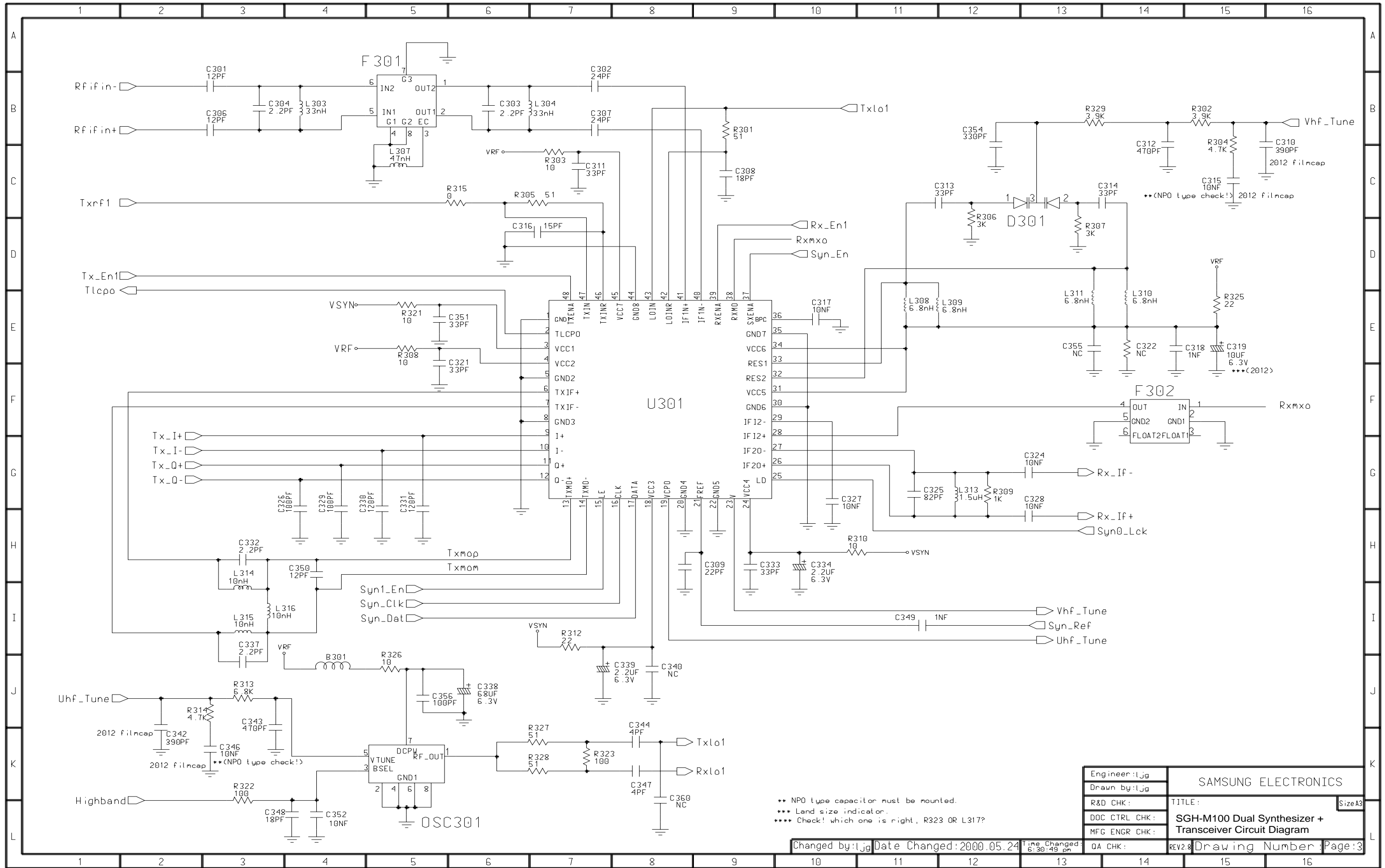
5-4 SGH-M100 M46 Asic Circuit Diagram



Engineer: Ijg	SAMSUNG ELECTRONICS	
Drawn by: Ijg	TITLE:	
R&D CHK:	SGH-M100	Size A3
DOC CTRL CHK:	M46 Asic Circuit Diagram	
MFG ENGR CHK:	REV2.8	Drawing Number
QA CHK:	Page: 2	

Changed by: kse Date Changed: 2000.05.24 Time Changed: 4:33:08 pm

5-5 SGH-M100 Dual Synthesizer + Transceiver Circuit Diagram

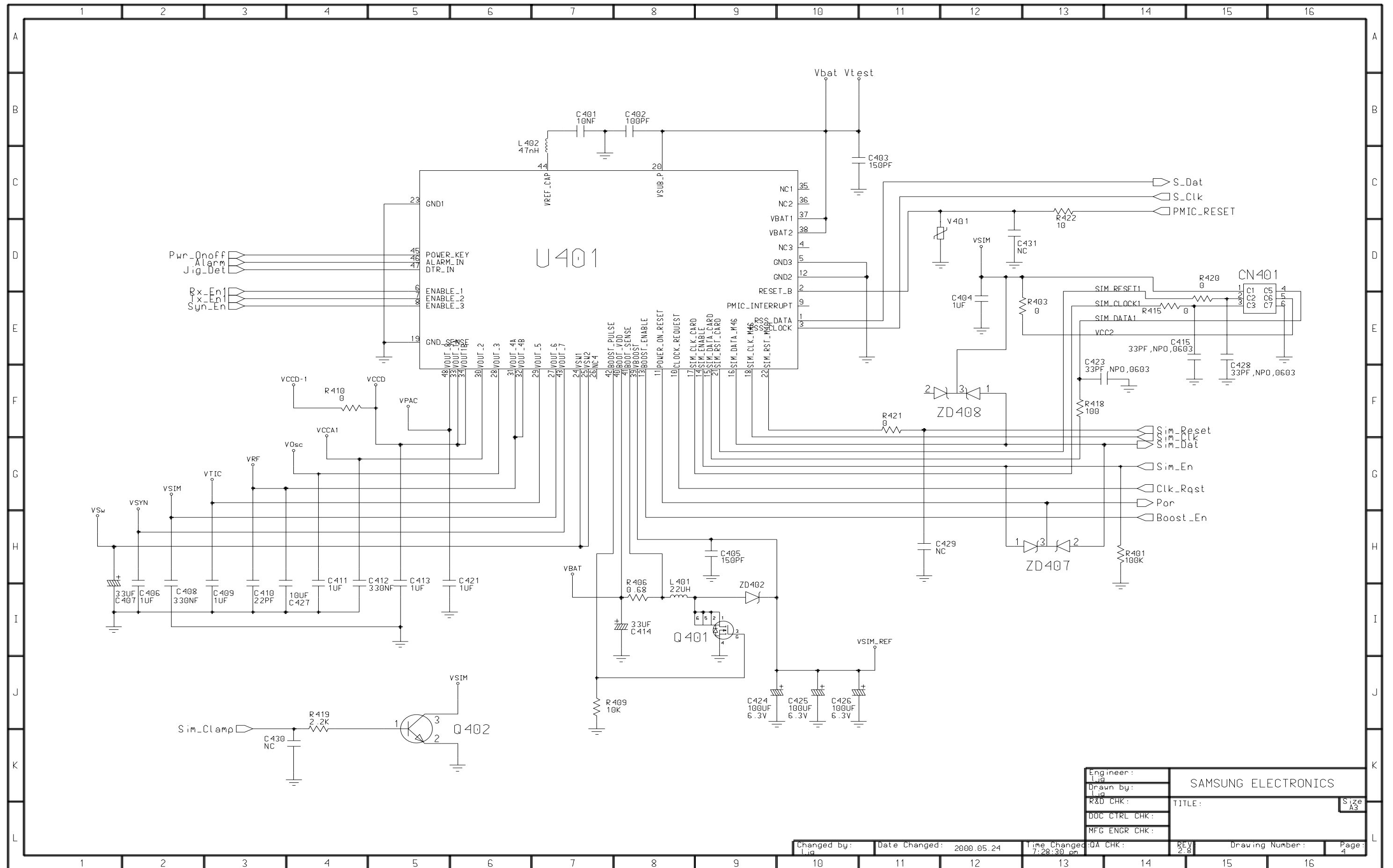


** NPO type capacitor must be mounted.
 *** Land size indicator.
 **** Check! which one is right, R323 OR L317?

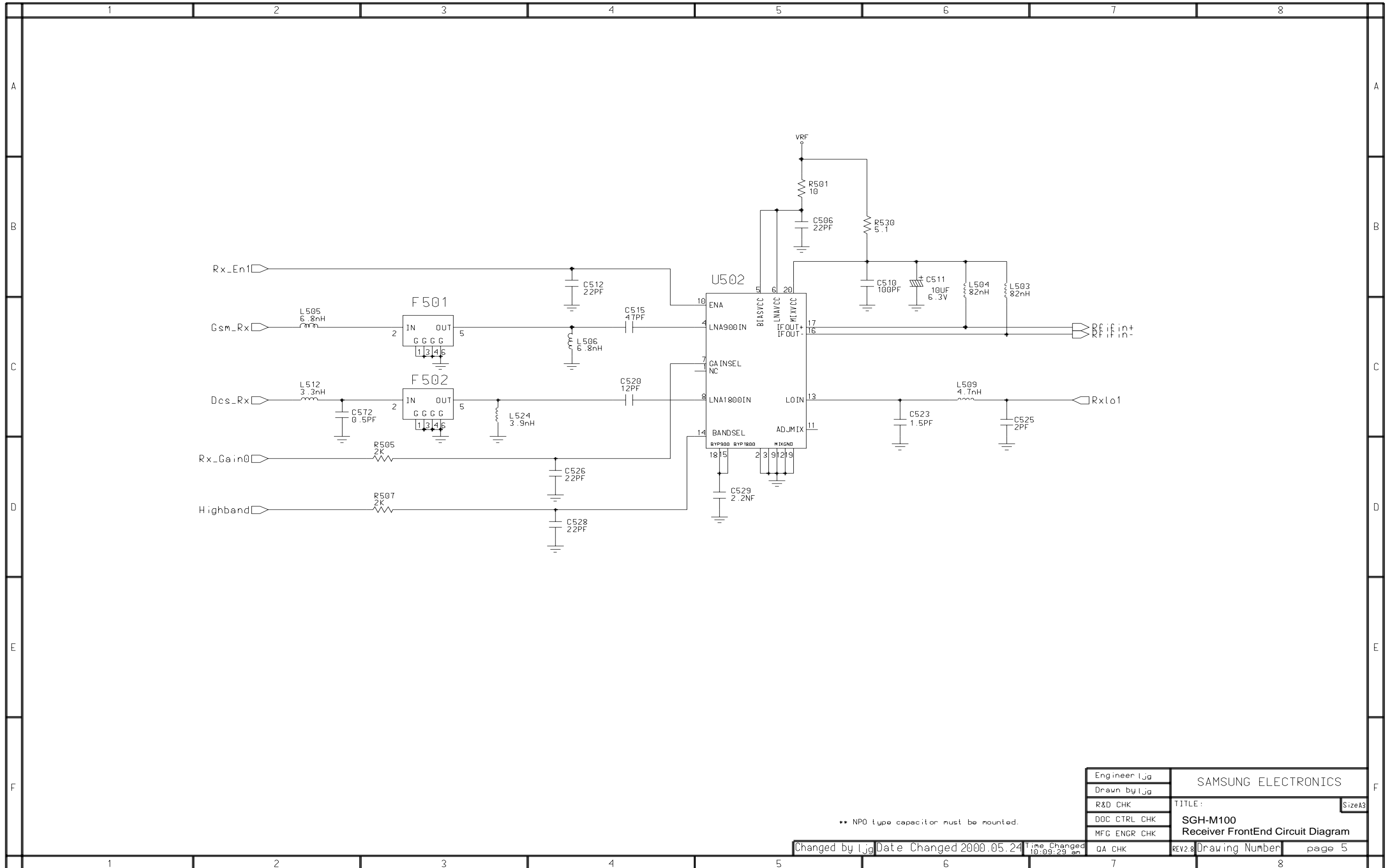
Engineer: IJg	SAMSUNG ELECTRONICS	
Drawn by: IJg	Size A3	
R&D CHK:	TITLE:	
DOC CTRL CHK:	SGH-M100 Dual Synthesizer + Transceiver Circuit Diagram	
MFG ENGR CHK:		
DA CHK:	REV2.8	Drawing Number: Page: 3

Changed by: IJg Date Changed: 2000.05.24 Time Changed: 6:30:49 pm

5-6 SGH-M100 Power Management Circuit Diagram



5-7 SGH-M100 Receiver FrontEnd Circuit Diagram Circuit Diagram

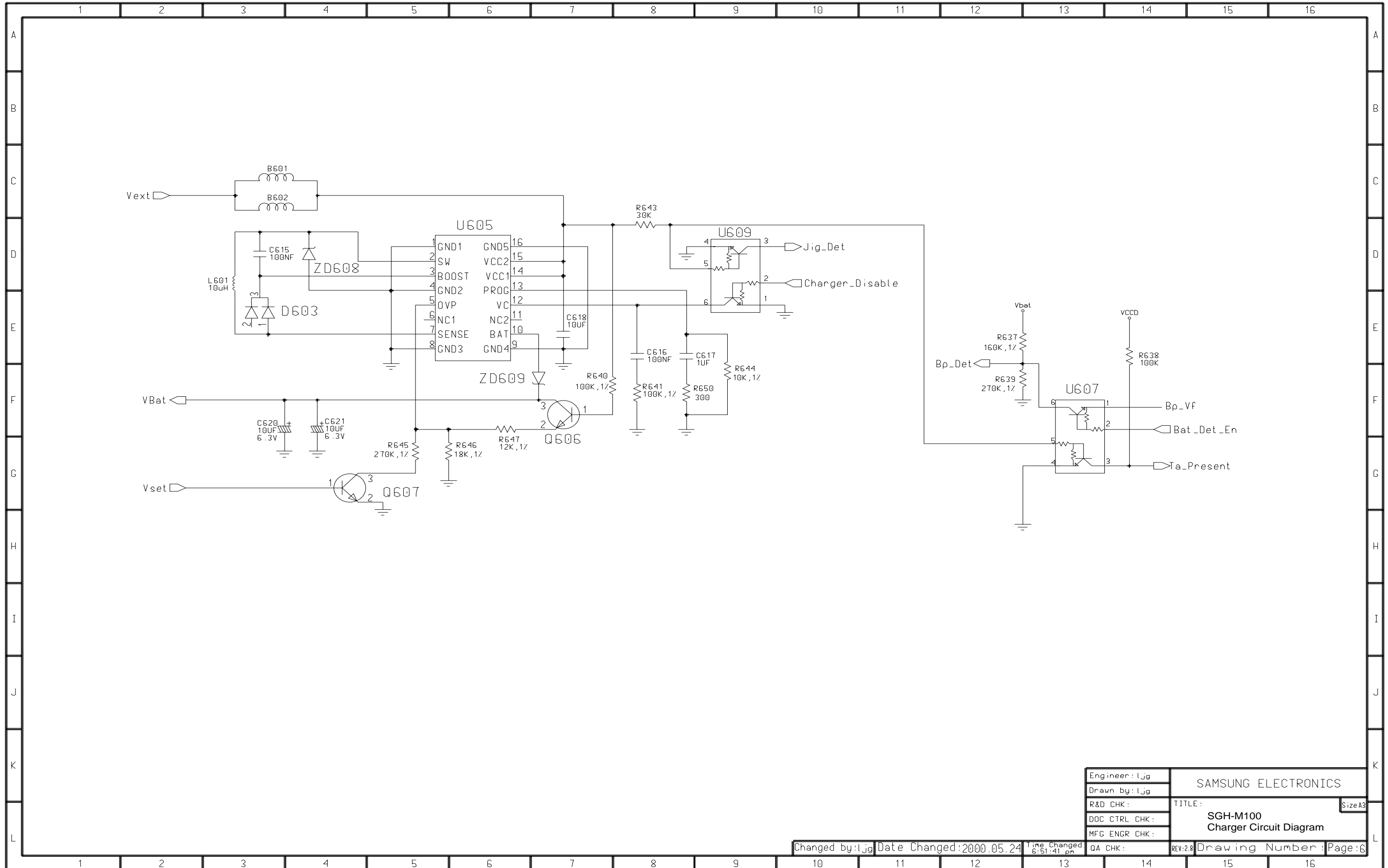


** NPO type capacitor must be mounted.

Changed by l.jg Date Changed 2000.05.24 Time Changed 10:09:29 am

Engineer l.jg	SAMSUNG ELECTRONICS	
Drawn by l.jg	TITLE :	
R&D CHK	SizeA3	
DOC CTRL CHK	SGH-M100	
MFG ENGR CHK	Receiver FrontEnd Circuit Diagram	
QA CHK	REV2.8	Drawing Number page 5

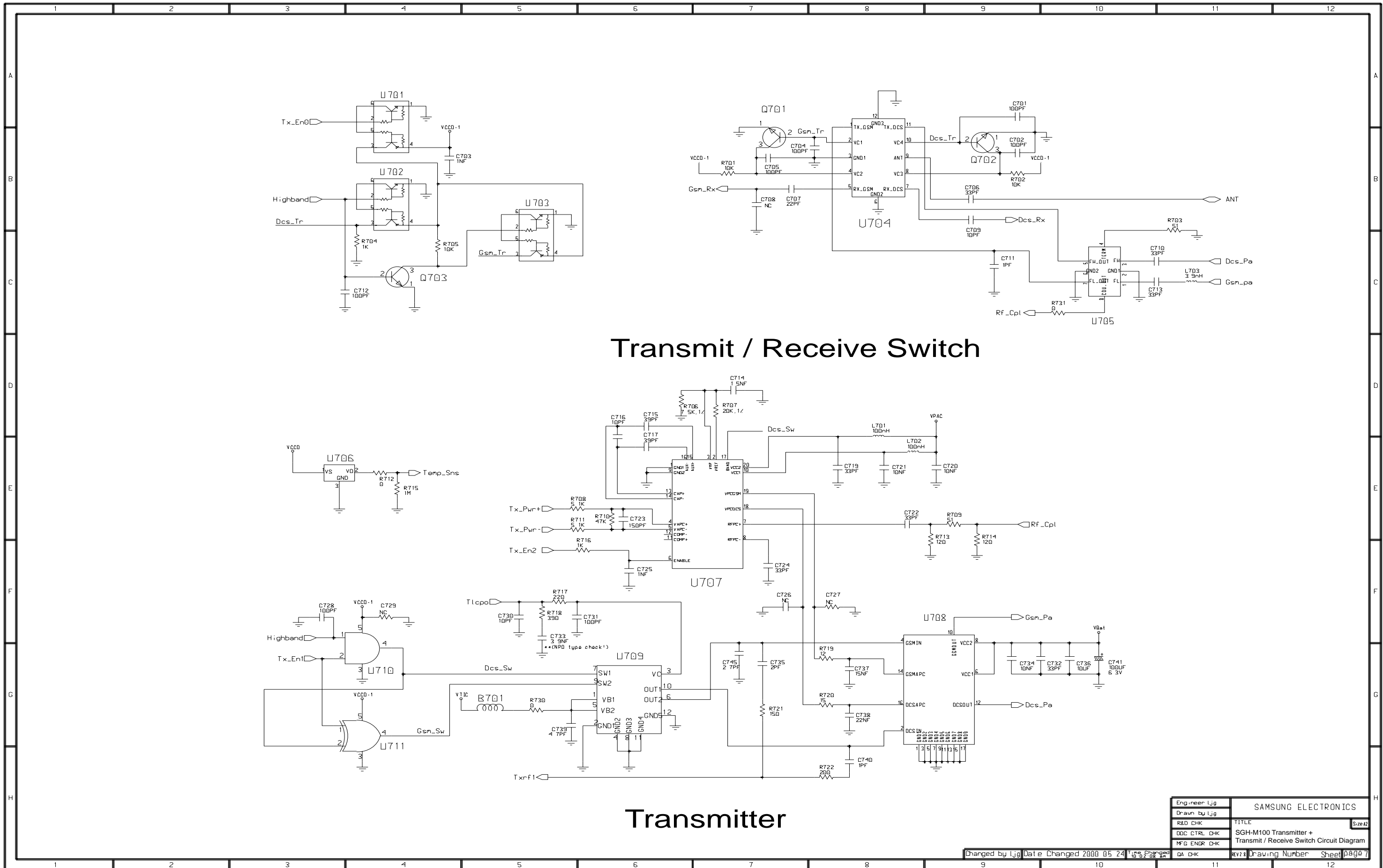
5-8 SGH-M100 Charger Circuit Diagram



Engineer: l.jg	SAMSUNG ELECTRONICS	
Drawn by: l.jg	TITLE: SGH-M100 Charger Circuit Diagram	
R&D CHK:	QA CHK:	Size A3
DOC CTRL CHK:	REV: 2.8	Drawing Number: Page: 6
MFG ENGR CHK:		

Changed by: l.jg Date Changed: 2000.05.24 Time Changed: 6:51:41 pm

5-9 SGH-M100 Transmitter + Transmit / Receive Switch Circuit Diagram



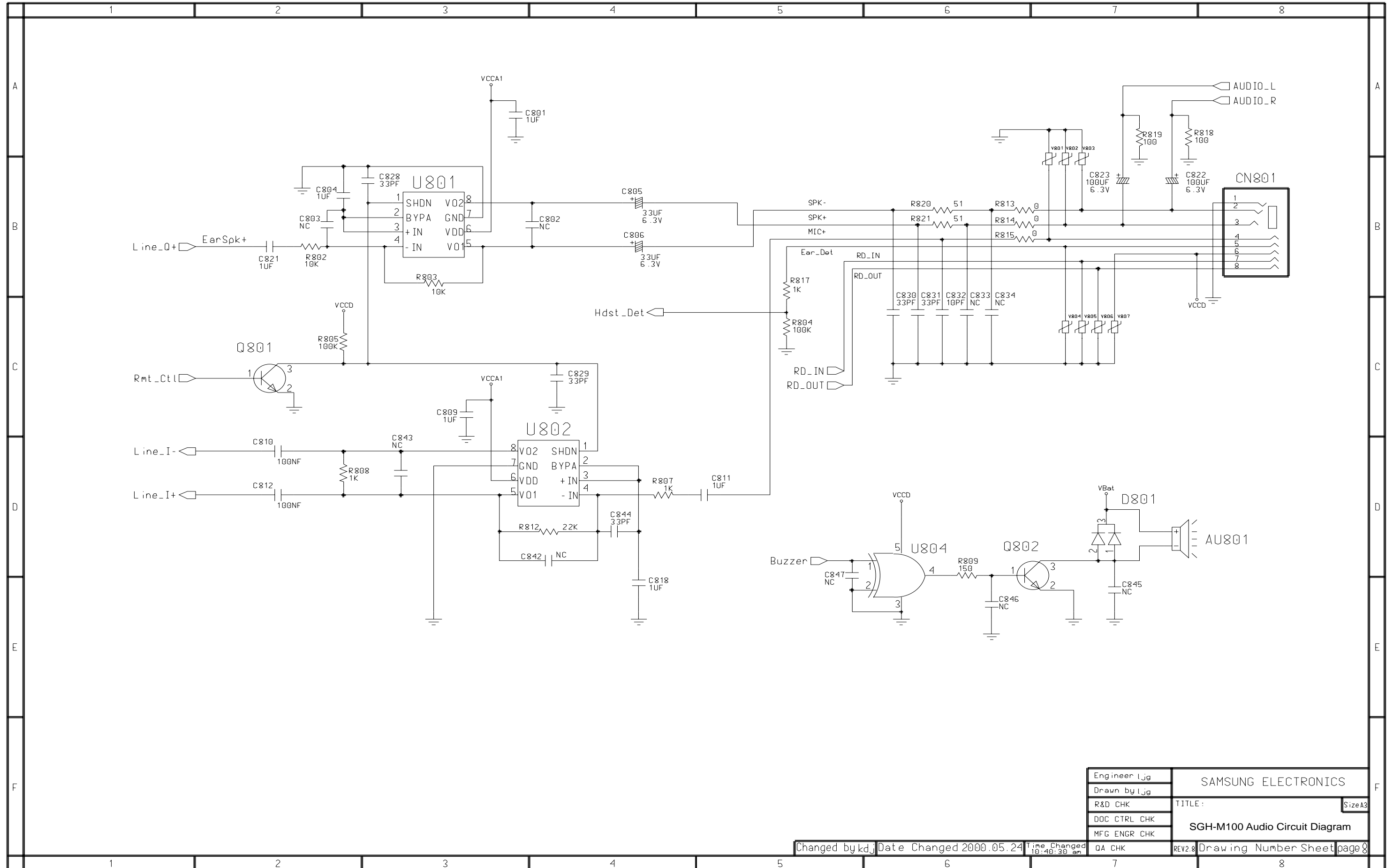
Transmit / Receive Switch

Transmitter

Engineer: l.jg	SAMSUNG ELECTRONICS	
Drawn by: l.jg	TITLE	Size: A2
R&D CHK	SGH-M100 Transmitter +	
DOC CTRL CHK	Transmit / Receive Switch Circuit Diagram	
MFG ENGR CHK	DA CHK	Drawing Number
QA CHK	kw1	Sheet 1 of 1

Changed by l.jg Date Changed 2000 05 24 16:02:08

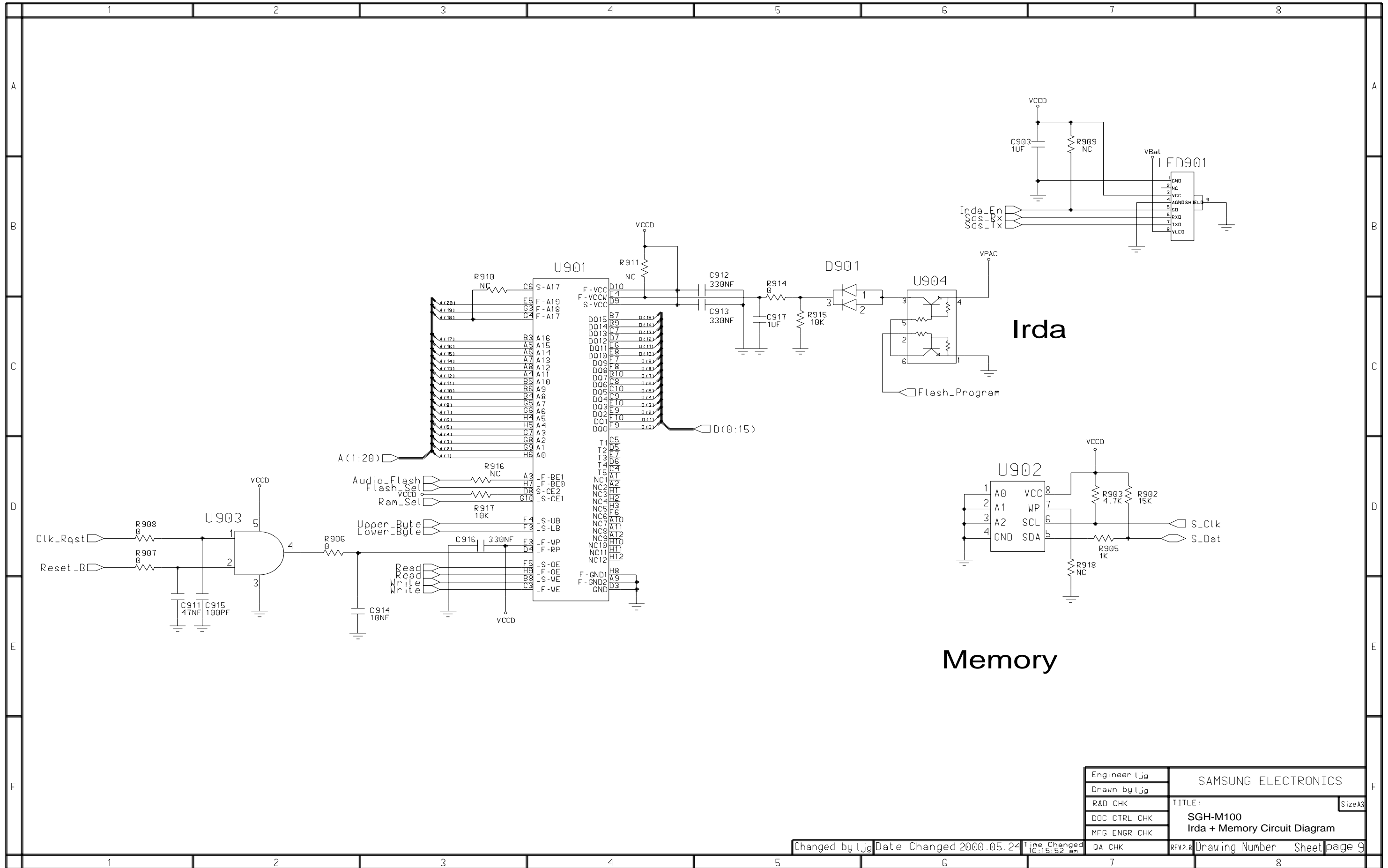
5-10 SGH-M100 Audio Circuit Diagram



Engineer Ijg	SAMSUNG ELECTRONICS	
Drawn by Ijg	TITLE:	
R&D CHK	Size A3	
DOC CTRL CHK	SGH-M100 Audio Circuit Diagram	
MFG ENGR CHK	REV. 2.8	Drawing Number Sheet page 8

Changed by kdj Date Changed 2000.05.24 Time Changed 10:40:30 am QA CHK

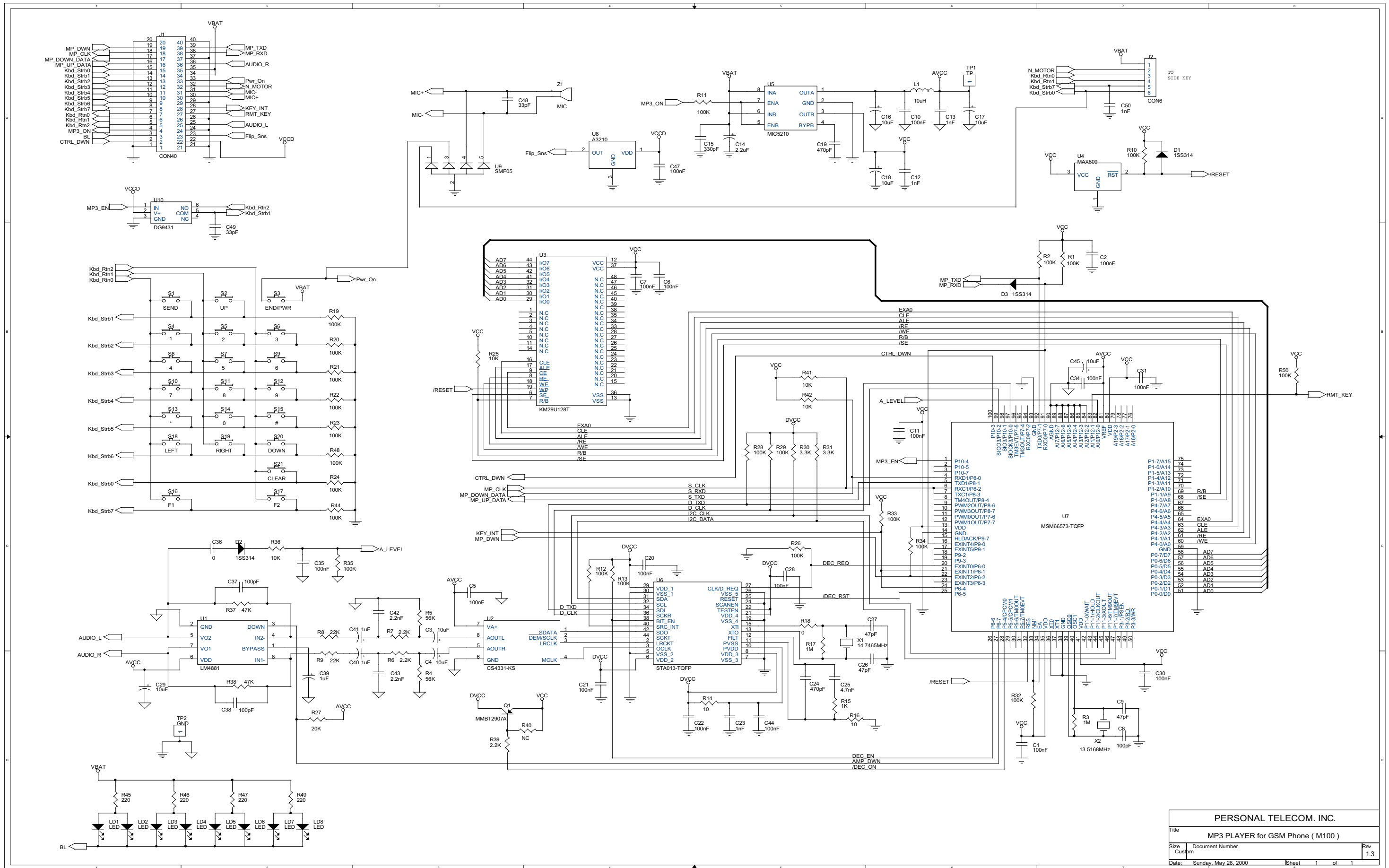
5-11 SGH-M100 Irda + Memory Circuit Diagram



Engineer Ijg	SAMSUNG ELECTRONICS	
Drawn by Ijg	TITLE:	
R&D CHK	SGH-M100	
DOC CTRL CHK	Irda + Memory Circuit Diagram	
MFG ENGR CHK	DA CHK	REV2.8 Drawing Number Sheet page 9

Changed by Ijg Date Changed 2000.05.24 Time Changed 10:15:52 am

5-12 SGH-M100 MP3 Circuit Diagram



PERSONAL TELECOM. INC.		
Title: MP3 PLAYER for GSM Phone (M100)		
Size: Custom	Document Number:	Rev: 1.3
Date: Sunday, May 28, 2000	Sheet: 1 of 1	